



Engineering
made by ThyssenKrupp Fördertechnik

References Referenzen
Références Referencias

**Bridge Type Scraper Reclaimers
for longitudinal stores**

**Brückenkratzer
für Längslager**

**Ponts-gratteurs
pour parc longitudinal**

**Rascadores de puente
para el parque longitudinal**

Translation	Übersetzung	Traduction	Traducción
Purchaser	Besteller	Client	Cliente
Location	Aufstellungsort	Lieu d'installation	Lugar de instalación
Year of construction	Baujahr	Année de construction	Año de construcción
Type of construction	Typ (Bauart)	Type de construction	Tipo de construcción
Material handled	Fördergut	Produits à manutentionner	Material a transportar
Bulk density t/m ³	Schüttgewicht t/m ³	Densité t/m ³	Densidad aparente t/m ³
Type designation:	Typ-Bezeichnung	Désignation du type:	Designación del tipo:
Example: LHO-600/40	Beispiel: LHO-600/40	Exemple: LHO-600/40	Ejemplo: LHO-600/40
LHO = bridge type scraper for longitudinal store	LHO = Brückenkratzer für Längslager	LHO = Pont-gratteur pour parc longitudinal	LHO = Rascador de puente para parque longitudinal
600 = Reclaim. Rate t/h	600 = Ausstapelleistung t/h	600 = Débit de reprise t/h	600 = Capacidad t/h
40 = Rail gauge m	40 = Spurweite m	40 = Empattement m	40 = Ancho de la via m

Referenzen der Unternehmen Demag, Polysius, O & K, Krupp India, PWH, PHB, Krupp Industrietechnik sowie der heutigen ThyssenKrupp Fördertechnik und ihrer Auslandsgesellschaften.

References of the companies Demag, Polysius, O & K, Krupp India, PWH, PHB, Krupp Industrietechnik as well as the ThyssenKrupp Fördertechnik of today and its foreign subsidiaries.

Um die Referenzliste übersichtlich zu halten, beginnt sie mit den Lieferungen aus dem Baujahr 1970.

In order to keep the reference list clear, it is starting with equipment, the year of construction of which was 1970.

Translation	Übersetzung	Traduction	Traducción
Material handled:	Fördergut:	Produit à manutentionner:	Material a transportar:
Alumina	Tonerde	Alumine	Alúmina
Amonium sulphate	Amoniumsulfat	Sulfate d'ammonium	Sulfato de amonio
Apatite	Apatit	Apatite	Apatita
Bauxite	Bauxit	Bauxite	Bauxita
Clay	Ton	Argile	Arcilla
Clinker	Klinker	Clinker	Clinker
Coal	Kole	Charbon	Carbón
Coking coal	Kokskohle	Charbon à coke	Hulla para coque
Coke	Koks	Coke	Coque
Coper concentrate	Kupferkonzentrat	Cuivre concentré	Concentrado de cobre
Crome ore	Chromerz	Minerai de chrome	Mineral de cromo
Dolerite	Dolerit	Dolérite	Dolerita
Fertilizer	Düngemittel	Engrais	Fertilizante
Fertilizer granulate	Düngemittel Granulat	Engrais granulé	Fertilizante granulados
Gold concentrate	Goldkonzentrat	Or concentré	Concentrado de oro
Grain	Getreide	Céréales	Cereales
Gypsum	Gips	Gypse	Yeso
Heavy soda	Schwer-Soda	Soude lourde	Sosa pesada
Iron ore	Eisenerz	Minerai de fer	Mineral de hierro
Iron ore concentrate	Eisenerzkonzentrat	Concentré de minerai de fer	Concent. De mineral de hierro
Kaolin	Kaolin	Kaolin	Caolín
Lime	Kalk	Chaux	Cal
Limestone	Kalkstein	Calcaire	Caliza
Limestone (high grade)	Kalkstein (hochgradig)	Calcaire (à haut degré)	Caliza (de alta concentración)
Limestone-clay-mixture	Kalkstein-Ton-Gemisch	Mélange calcaire / argile	Mezcla de caliza y arcilla
Limestone (marty)	Kalkstein (mergelig)	Calcaire marneux	Caliza margosa
Marl	Mergel	Marne	Marga
Pellets	Pellets	Boulettes	Pellets
Phosphate	Phosphat	Phosphate	Fosfato
Potash	Kalisalz	Potasse	Sales potásicas
Pyrite	Pyrit	Pyrite	Pirita
Quartz rock	Quartgestein	Minerai de quartz	Mineral de cuazo
Raw coal	Rohkohle	Charbon brut	Carbón en bruto
Raw wash coal	Rohwaschkohle	Charbon brut de lavage	Carbón en bruto
Rock salt	Steinsalz	Sel gemme	Sal gema
Rock phosphate	Steinphosphat	Phosphate pierreux	Piedra de fosfato
Run of mine coal	Förderkohle	Charbon tout-venant	Carbón todo uno
Salt	Salz	Sel	Sal
Sand (calcareous)	Sand (kalkhaltig)	Sable (calcaire)	Arena (calcáreo)
Shale	Tonschiefer	Argile schisteuse	Arcilla esquistosa
Sintermagnesite	Sintermagnesit	Magnésite frittée	Magnesita sinterizada
Soda ash	Soda-Asche	Cendre de soude	Ceniza de sosa
Slate	Schiefer	Schoste	Esquisto
Stone coal	Steinkohle	Charbon	Carbón de piedra
Sugar	Zucker	Sucre	Azúcar
Sulphur	Schwefel	Sulfure	Sulfuro
Urea	Harnstoff	Urée	Urea
KCL	KCL	KCL	KCL
DAP	DAP	DAP	DAP
MAP	MAP	MAP	MAP

Reclaiming scrapers / Abbaukratzer / Gratteurs de reprise

Bauart/Sinnbild
Type/Symbol
Type/Symbole

Bezeichnung
Notation
Désignation

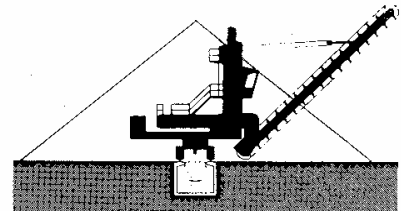
ZWD



Zweischienen-
Schwenkkratzer
mit 2 Schwenkwerken

Twinrail slewing scraper
with double slewing gear

Grateur-birail pivotant
à double orientation



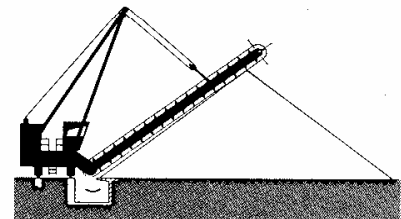
SK



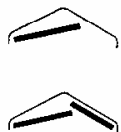
Seitenkratzer

Side scraper

Grateur latéral



VP



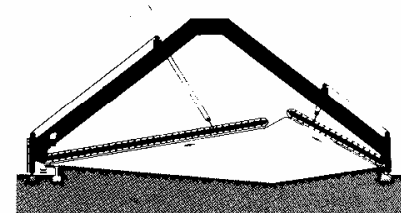
Vollportalkratzer

Portal scraper

Grateur portique

VP 1 mit Kratzerketten nur auf einer Seite
with scraper chains one side only
à chaînes gratteuses d'un côté

VP 2 mit Kratzerketten auf beiden Seiten
with scraper chains both sides
à chaînes gratteuses des deux côtés



Die Zahl hinter dem Querstrich gibt die Leistung in t/h wieder, die Zahl hinter dem Schrägstrich die Kratzerlänge (bei ZWD- und SK-Kratzern), die Spannweite (bei VP- und LHO-Kratzern) oder den Durchmesser des Kreislagers (bei KHO-Kratzern), jeweils in m.

The figure behind the dash shows the capacity in t/h, the figure behind the inclined stroke the length of scraper (with ZWD- and SK-type scrapers), the span (with VP- and LHO-type scrapers), or the circular store diameter (with KHO-type scrapers) in m.

Le chiffre après le trait d'union marque le débit en t/h, celui après la barre oblique la longueur du grateur (pour grateurs ZWD et SK), la portée (s'il s'agit de grateurs VP ou LHO), ou diamètre parc polaire (pour grateurs KHO) en m.

Reclaiming scrapers / Abbaukratzer / Gratteurs de reprise

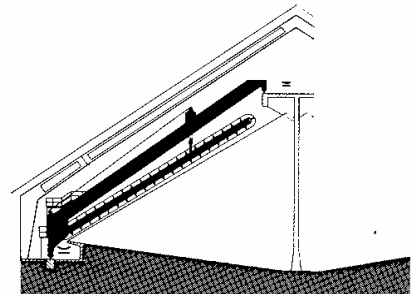
Bauart/Sinnbild
Type/Symbol
Type/Symbole

Bezeichnung
Notation
Désignation

HP



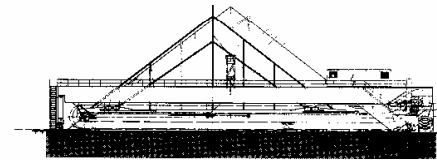
Halbportalkratzer
Semi-portal scraper
Gratteur semi-portique



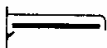
LHO



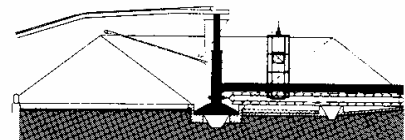
Brücken-(Homogenisierungs-)Kratzer für Längslager
Bridge-type (homogenizing) scraper for longitudinal store
Gratteur horizontal pour parc longitudinal



KHO



Brücken-(Homogenisierungs-)Kratzer für Kreislager
Bridge-type (homogenizing) scraper for circular store
Gratteur horizontal pour parc polaire



Beispiele:

SK-400/16

Seitenkratzer, 400 t/h Leistung, 16 m Kratzerlänge

VP1-280/32

Vollportalkratzer mit einer oder mehreren Hauptkratzerketten, 280 t/h Leistung, 32 m Spannweite

VP2-800/47

Vollportalkratzer mit Haupt- und Nebenkratzerketten, 800 t/h Leistung, 47 m Spannweite

LHO-400/42

Brückenskratzer für Längslager, 400 t/h Leistung, 42 m Spannweite

KHO-750/86

Brückenskratzer für Kreislager mit 86 m Durchmesser, 750 t/h Leistung

Examples:

SK-400/16

Side scraper, capacity 400 t/h, length of scraper 16 m

VP1-280/32

Portal scraper capacity 280 t/h, span 32, with scraper chain one side only

VP2-800/47

Portal scraper capacity 800 t/h, span 47 m, with scraper chains both sides

LHO-400/42

Bridge-type scraper for longitudinal store, capacity 400 t/h, span 42 m

KHO-750/86

Bridge-type scraper for circular store, 86 m \varnothing , capacity 750 t/h

Exemples:

SK-400/16

Gratteur latéral, débit 400 t/h, longueur du gratteur 16 m

VP1-280/32

Gratteur portique débit 280 t/h, portée 32 m, à chaîne gratteuse d'une côte

VP2-800/47

Gratteur portique débit 800 t/h, portée 47 m, à chaînes gratteuses des deux côtés

LHO-400/42

Gratteur horizontal pour parc longitudinal, débit 400 t/h, portée 42 m

KHO-750/86

Gratteur horizontal pour parc polaire 86 m \varnothing , débit 750 t/h

Bridge type scraper reclaimer for longitudinal store

No.	Purchaser	Location	Year	Type	Material handled	Bulk density t/m ³
1	Salzgitter Erzbergbau AG Salzgitter / Germany	Heerte, Germany	1970	LHO-720/23	Iron ore	2,15
2	Portland Zementwerk Dotternhausen Rudolf Rohrbach KG Dotternhausen / Germany	Dotternhausen, Germany	1971	LHO-150/23	Limestone	1,4 - 1,5
3	S.A. des Ciments Portland de Lorraine Héming (Moselle)	Héming, France	1973	LHO-300/33	Limestone	1,3 - 1,4
4	Agrico Chemical Co. Tulsa (Okla.), USA	Faustina Works Donaldsonville (L.A.), USA	1973	LHO-270/41	Phosphate	1,54
5	Cimento Tupi S.A. Rio de Janeiro / Brazil	Pedra do Sino, Brazil	1974	LHO-250/41	Limestone	1,5
6	Möllers Südamericana for Fabrica de Cimento, Lagoa Santa (Minas Gerais), Brazil	Lagoa Santa, Brazil	1974	LHO-350/38	Limestone, Clay	1,5
7	PPC, Pretoria Portland Cement Cy Ltd. Johannesburg / South Africa	Slurry, South Africa	1975	LHO-600/40	Limestone	1,4
8	Chien Tai Cement Corp. Ltd. Tso Ying / Taiwan	Kaohsiung, Tawain	1975	LHO-250/30	Limestone	1,5
9	Erste Nederlandse Cementindustrie ENCI Maastricht / The Netherlands	Lixhe, Belgium	1975	LHO-300/34	Marl	1,4
10	Tehran Cement Co. Teheran / Iran	Shemal, Iran	1975	LHO-500/40	Limestone	1,5
11	New Kerman Cement Company Inc., Teheran / Iran	Kerman, Iran	1975	LHO-400/32	Limestone, Clay	1,3 - 1,5
12	Humboldt-Wedag, Köln for SNMC, Alger	Setif, Algeria	1975	LHO-300/41	Limestone	1,5
13	Marubeni/Kawasaki, Düsseldorf for Cimenterie d'El Asnam, Algeria	El Asnam, Algeria	1976	LHO-600/43	Limestone	1,3
14 / 15	Dyckerhoff Zementwerke AG, Wiesbaden for Interbosselle, Luxemburg	Rumelange, Luxemburg	1976	LHO-500/40	Limestone, Marl	1,6

Bridge type scraper reclaimer for longitudinal store

No.	Purchaser	Location	Year	Type	Material handled	Bulk density t/m ³
16	Polysius AG, Neubeckum / Germany	Ukpilla, Nigeria	1976	LHO-150/35	Limestone, Clay	1,6
17	F.L. Smidth, Paris for Anglo Alpha Cement	South Africa	1976	LHO-450/33	Limestone	1,5
18	F.L. Smidth, Paris for Anglo Alpha Cement	South Africa	1976	LHO-150/33	Coal	0,8
19	Marubeni, Düsseldorf for Kawasaki, Tokio / Japan	Saida, Algeria	1976	LHO-300/28	Limestone	1,6
20	Polysius AG, Neubeckum / Germany	Split, Jugoslawia	1976	LHO-500/40	Limestone	1,4
21	Knauf, Iphofen / Germany	Fleurus, Algeria	1976	LHO-150/23	Gypsum	1,4 - 1,5
22	Polysius AG, Neubeckum / Germany	Yamaha, Saudi Arabia	1976	LHO-600/43	Limestone	1,3
23	Nikex, Budapest for Szikkti, Budapest / Hungary	Belapatfalva, Hungary	1977	LHO-400/42	Limestone	1,5
24	F.L. Smidth, Copenhagen / Denmark	Tourah, Egypt	1977	LHO-1000/40	Limestone	1,4
25 / 26	F.L. Smidth, Copenhagen / Denmark	Bizerte, Tunisia	1977	LHO-300/32,6	Limestone, Marl	1,5
27	F.L. Smidth, Copenhagen / Denmark	Sudan, EAS	1977	LHO-80/23	Limestone	1,4
28	Polysius for Cementa A.B., Malmö	Slite, Gotland, Sweden	1977	LHO-400/28,5	Limestone	1,6
29	Polysius for Cementa A.B., Malmö	Slite, Gotland, Sweden	1977	LHO-800/43	Marl	1,6
30	Cimansaz IVA, Teheran	Loshan II, Iran	1977	LHO-250/31,5	Limestone	1,5
31	F.L. Smidth, Copenhagen / Denmark	Vietnam	1977	LHO-150/33	Coal	0,9
32	Centunion, Madrid / Spain	Perkasa, Indonesia	1977	LHO-300/42	Limestone	1,5

Bridge type scraper reclaimer for longitudinal store

No.	Purchaser	Location	Year	Type	Material handled	Bulk density t/m ³
33	Zementfabrik Schwenk, Ulm / Germany	Mergelstetten, Germany	1977	LHO-500/40	Marl	1,6
34	F.L. Smidth, Paris for Anglo Alpha Cement	South Africa	1977	LHO-500/33	Lime	1,5
35	Fuller Comp. Outasomgra Pa, USA for SUEZ-Cement	Egypt	1977	LHO-400/37	Limestone	1,4
36	NCC - National Cement Comp., Kairo / Egypt	Heluan, Egypt	1977	LHO-750/38,5	Limestone, Clay	1,6
37 / 38	Hyunday, Seoul / Korea	Okke, Korea	1978	LHO-400/33	Limestone	1,5
39	Südbayrische Portland-Zementwerke Gebr. Wiesböck	Rohrdorf, Germany	1978	LHO-200/26	Marl	1,5
40	Cementia Holding, Zürich for Bamburi Portland-Zement	Mombasa, Kenya	1979	LHO-550/37	Limestone	1,4 - 1,5
41	Kawasaki, Kobe / Japan ITOH, Düsseldorf / Germany	Honduras	1979	LHO-170/29	Limestone, Shale	1,5
42	Centunion, Madrid / Spain	Perkasa IV, Indonesia	1979	LHO-300/42	Limestone	1,45
43	Assiut Cement Co. Ltd., Werk Assiut / Egypt	Assuit, Egypt	1979	LHO-500/43	Limestone	1,4
44	Assiut Cement Co. Ltd., Werk Assiut / Egypt	Assuit, Egypt	1979	LHO-300/26	Clay	1,4
45 - 46	Mitsubishi, Düsseldorf for Derna Zementwerke	Derna, Libya	1980	LHO-300/44	Limestone, Clay	1,5
47	Tasek Cement Berhad, Ipoh / Malaysia	Ipoh, Malaysia	1980	LHO-100/26	Coal	0,8
48	Castle Peak Com, Kaiser Int. Services	Hongkong, China	1981	LHO-800/40	Limestone	1,6
49	Vryheid Coal and Iron Comp. PWH, South Africa	Hlobane, South Africa	1981	LHO-600/28	Coal	0,8
50	Marubeni, Düsseldorf for Kawasaki, Tokio / Japan	Zliten, Libya	1981	LHO-500/34	Limestone, Clay	1,6

Bridge type scraper reclaimer for longitudinal store

No.	Purchaser	Location	Year	Type	Material handled	Bulk density t/m ³
51	MHI - Mitsubishi Heavy Industry, Hiroshima / Japan	Nanking, China	1981	LHO-400/37	Limestone	1,6
52	Bergbau AG Westfalen, Dortmund / Germany	Neumonopol Bergkamen, Germany	1981	LHO-1600/49	Coal	0,85
53	Technopromimport, UdSSR	Ukraine, UdSSR	1981	LHO-1000/32,5	Limestone	1,4
54	Technopromimport, UdSSR	Usbekistan, UdSSR	1981	LHO-1000/32	Shale	1,6
55	Chien Tai Cement, Taiwan	Kaohsiung, Taiwan	1981	LHO-200/30	Limestone	1,2
56	Südbayrische Portland-Zementwerke Gebr. Wiesböck	Rohrdorf, Germany	1981	LHO-50/18,4	Coal	0,85
57	BHP - Stockton, Australia	Stockton Borehde, Australia	1981	LHO-900/36	Coal	0,85
58 - 59	Anglo American, South Africa	Goedehoop, South Africa	1981	LHO-650/35	Coal	0,85
60	F.L. Smidth	Bouira, Algeria	1981	LHO-350/37	Limestone	1,4
61	Heracles General Cement Co, Werk Volos / Greece	Greece	1981	LHO-100/33	Coal	0,8
62	Heidelberger Portland - Zementwerk, Werk Schelklingen / Germany	Germany	1981	LHO-120/33	Coal	0,85
63	Coromandel Fertilisers Ltd., Secunderabad / India	Chilamkur Andra Pradesh India	1981	LHO-500/33	Limestone	1,36
64	Oman Cement Co., Ruwi - Muscat / Oman	Oman	1981	LHO-400/26	Limestone (marly)	1,4
65	Oman Cement Co., Ruwi - Muscat / Oman	Oman	1981	LHO-400/26	Limestone	1,4
66	Oman Cement Co., Ruwi - Muscat / Oman	Oman	1981	LHO-100/26	Quartzgestein	1,45

Bridge type scraper reclaimer for longitudinal store

No.	Purchaser	Location	Year	Type	Material handled	Bulk density t/m ³
67	RAG, Essen / Germany	Pattberg, Moers Germany	1981	LHO-1300/33,5	Run of mine coal	
68	Anglo Alpha Union Lime, Ouplaas, South Africa	Ouplaas, South Africa	1982	LHO-500/28	Limestone	1,5
69	Anglo Alpha Union Lime, Ouplaas, South Africa	Ouplaas, South Africa	1982	LHO-500/28	Limestone	1,5
70	Saudi Kuwaiti Cement Mfg. Co., Dammam / Saudi Arabia	Saudi Arabia	1982	LHO-500/40	Kalkstein-Ton- Gemisch	1,3
71	Saudi Kuwaiti Cement Mfg. Co., Dammam / Saudi Arabia	Saudi Arabia	1982	LHO-500/40	Kalkstein-Ton- Gemisch	1,3
72	Saudi Kuwaiti Cement Mfg. Co., Dammam / Saudi Arabia	Saudi Arabia	1982	LHO-500/40	Limestone	1,3
73	Anglo Alpha Ltd., Sandton / R.S.A.	South Africa	1982	LHO-400/38	Limestone	1,5
74	Anglo Alpha Ltd., Sandton / R.S.A.	South Africa	1982	LHO-300/23	Dolerit / Schiefer	1,5
75	ACC Babcock Ltd., Bombay / India	Tandur Andra Pradesh India	1982	LHO-500/33	Limestone	1,5
76	ACC Babcock Ltd., Bombay / India	Tandur Andra Pradesh India	1982	LHO-500/33	Shale	1,4
77	ACC Babcock Ltd., Bombay / India	Tandur Andra Pradesh India	1982	LHO-125/23	Coal	0,6
78	Modi Rubber Cement Ltd. Werk Rawan / India	Modi Gram Madhya Pradesh India	1982	LHO-500/33	Limestone (high grade)	1,4
79	Modi Rubber Cement Ltd. Werk Rawan / India	Modi Gram Madhya Pradesh India	1982	LHO-500/33	Limestone	1,4

Bridge type scraper reclaimer for longitudinal store

No.	Purchaser	Location	Year	Type	Material handled	Bulk density t/m ³
80	Kesoram Industries & Cotton Mills Ltd., Hyderabad / India	Sedam Karnataka India	1982	LHO-500/33	Limestone	1,36
81	Zentralkokerei Saar	Dillingen, Germany	1983	LHO-800/57,5	Coal	0,7
82	Bergbau AG Niederrhein, Duisburg / Germany	Kokerei Prosper Bottrop, Germany	1983	LHO-600/42	Coking coal	0,8
83	RAG, Essen Germany	Kokerei Prosper Bottrop, Germany	1983	LHO-600/42	Coal	
84	Ketton Cement Ltd., Werk Lincolnshire / England	Lincolnshire, England	1984	LHO-100/33	Coal	0,8
85	Jaypee Rewa Cement Ltd. Rewa / India	Rewa Madhya Pradesh India	1984	LHO-600/33	Limestone	1,4
86 - 89	NCC - National Cement Comp., Kairo / Egypt	Tabbin Egypt	1985	LHO-750/40	Limestone, Clay	1,5
90	Heidelberger Zementwerke	Schelklingen, Germany	1985	LHO-400/24	Limestone	1,4
91	Fuller Company Bethlehem	Sangjani, Pakistan	1986	LHO-320/31,3	Limestone	1,45
92	Cementos Hontoria S.A., Venta de Banos / Spanien	South Africa	1986	LHO-250/33	Limestone	1,4
93	Preussag AG, Ibbenbüren	Ibbenbüren, Germany	1987	LHO-1100/45	Raw washing coal	1,1
94	Gold Fields S.A. Ltd., Leendoorn / R.S.A.		1987	LHO-350/46	Goldore	1,6
95	India Cement Ltd., Madras / India	Shankar, Nagar, Tamil Nadu India	1987	LHO-600/33	Limestone	1,4
96	S.A. Cimenteries CBR, Lixhe / Belgium	Lixhe, Belgium	1988	LHO-425/44	Limestone	1,4

Bridge type scraper reclaimer for longitudinal store

No.	Purchaser	Location	Year	Type	Material handled	Bulk density t/m ³
97	Kobe Steel	Hoze Mahi, Iran	1989	LHO-500/40	Limestone	1,6
107	Tong Yang Cement Corp., Samchok / Südkorea	South Korea	1989	LHO-800/38	Limestone	1,4
108	Tong Yang Cement Corp., Samchok / Südkorea	South Korea	1989	LHO-100/26	Tonschiefer	1,5
109	Tong Yang Cement Corp., Samchok / Südkorea	South Korea	1989	LHO-175/23	Coal	0,8
110	Tong Yang Cement Corp., Samchok / Südkorea	South Korea	1989	LHO-175/23	Coal	0,8
111	Nikex, Budapest / Hungary	Hungary	1989	LHO-450/42	Limestone	1,5
112	Lehigh Portland Cement	Cementon, N.Y., USA	1989	LHO-400/29	Limestone	1,5
113	Taiwan Cement Engineering Corp. Taipei / Taiwan	Taiwan	1990	LHO-550/34	Limestone	
114	Kawasaki Heavy Industries Kobe / Japan	Beni-Suef, Egypt	1990	LHO-600/33	Limestone	1,6
115	Solid Cement Corp., Makati Manila, Philippinen	Taiwan	1990	LHO-350/41	Limestone	1,4
116	Cementos Apasco	Mexiko	1990	LHO-400/29	Limestone	1,4
117	BAG-Wesfalen Dortmund	Dortmund, Germany	1991	LHO-500/63	Coal	0,8
118	Ilam Cement	Iran	1991	LHO-500/35	Limestone, Marl	1,4
119	Khorasan Cement	Iran	1991	LHO-500/35	Limestone, Marl	1,4
120	Tong Yang Cement Corp., Samchok / Südkorea	South Korea	1991	LHO-1400/38	Limestone	1,4
121	Gordonstone Coal Management Pty. Ltd. Brisbane, Qld., Australia	Emerald, Qld. (Australia)	1991	LHO-1100/46	Raw coal	

Bridge type scraper reclaimer for longitudinal store

No.	Purchaser	Location	Year	Type	Material handled	Bulk density t/m ³
122	Ash Grove Cement	Seattle, Washington USA	1991	LHO-225/35,6	Limestone	1,45
123	White Industries, Australia	PiparAustraliar, India	1991	LHO-1800/49,5	Raw coal	0,95
124	Anglo American, South Africa	Landau, South Africa	1992	LHO-1560/51	Coal	0,9
125	Koryo Cement Co.	Korea	1992	LHO-500/30,8	Limestone	1,5
126	Ardebil Cement Co.	Iran	1992	LHO-500/35	Limestone, Marl	1,4
127	Gordonstone Coal, Australia	Emerald, Qld. (Australia)	1992	LHO-1000/46	Raw coal	0,8
128 - 129	Khuzestan Cement Co.	Iran	1993	LHO-500/35	Limestone	
130	Hegmatan-Hamadan Cement Co.	Iran	1993	LHO-500/35	Limestone	
131	Bojnurd Cement Co.	Iran	1993	LHO-500/35	Limestone	
132	Hormozgan Cement Co.	Iran	1993	LHO-500/35	Limestone	
133	Kordestan Cement Co.	Iran	1993	LHO-500/35	Limestone	
134	Hormozgan Cement Co.	Iran	1993	LHO-500/35	Limestone	
135	Sharoud Cement Co.	Iran	1993	LHO-500/35	Limestone	
136	Aswuarabad Cement Co.	Iran	1993	LHO-100/23	Limestone	
137	Ben Vid Cement Co.	Iran	1993	LHO-100/23	Limestone	
138	Davao Union Cement Co.	Ilang, Davao City Philippinen	1994	LHO-60/33	Coal	
139	Thai Petrochemical Ind.	Polene, Thailand	1994	LHO-400/26	Shale	
140	Daewoo Cement Co. Ltd., Shandong / V.R. China		1994	LHO-800/38	Limestone	1,4
141	Tisco Cement	Sonadih	1994		Limestone	1,4 - 1,5

Bridge type scraper reclaimer for longitudinal store

No.	Purchaser	Location	Year	Type	Material handled	Bulk density t/m ³
142	UNICEM, Bulawayo, Zimbabwe	Colleen Bawn, Zimbabwe	1994	LHO-300/37	Limestone	1,5
143	Cementos Nacionales	Dominikan. Republik	1995	LHO-350/28	Limestone, Clay	
144	Société de Ciments, Libanais	Chekka, Libanon	1995	LHO-600/38	Limestone, Marl, Clay	
145	Summit Cement	Cebu, Philippinen	1995	LHO-1200/36	Limestone	
146	Gujarat Ambuja Cements	Darlaghat	1995		Limestone	1,4 - 1,6
147	Gujarat Ambuja Cements	Darlaghat	1995		Coal	0,8
148	SASOL, Johannesburg, South Africa	Twistdraai (Secunda), South Africa	1995	LHO-1800/51	Raw Coal	0,85
149	Juan Minetti S.A.	Argentina	1996	LHO-600/40	Limestone	
150	Hanjung	Korea	1996	LHO-800/43,6	Coal	
151	Prism Cements Ltd.	Satna	1996		Limestone	1,58
152	India Cements Ltd.	Dalavoi	1996		Limestone	1,4
153	BHP DRI, Australia	Port Hedland, Australia	1996	LHO-1300/45	Iron ore fines	2,5
154	BHP DRI, Australia	Port Hedland, Australia	1996	LHO-1400/45	Iron ore fines	2,8
155	Thai Petrochemical Ind.	Polene, Thailand	1997	LHO-400/26	Shale	
156	CMM	Vazante - MG, Brazil	2001 / 2002	LHO-150/21	Willemita	1,8
157	Cimenterie de Ain El Kebira	Ain El Kebira, Algeria	2004	LHO-450/41	Limestone	1.4
158	Tehran Cement Co.	Tehran, Iran	2004	LHO-750/37	Limestone	1.45

Bridge type scraper reclaimer for longitudinal store

No.	Purchaser	Location	Year	Type	Material handled	Bulk density t/m ³
159	Hegmatan Cement Co.	Hegmatan, Iran	2004	LHO-750/37	Limestone/Clay	1.4 - 1.5
160	Société des Ciments de Sour El Ghozlane	Sour El Ghozlane, Algeria	2004	LHO-350/37	Limestone	1.4
161	Firuzkuh Cement Co.	Firuzkuh, Iran	2004	LHO-560/35	Limestone/Clay	1.45
162	Omran Anarak Cement Co.	Delijan Plan, Iran	2004	LHO-560/35	Limestone/Clay	1.5
163	Ilam Cement Co.	Ilam, Iran	2004	LHO-560/35	Limestone/Marl	1.45
164	Mazandaran Cement Co.	Mazandaran, Iran	2004	LHO-800/35	Limestone/Clay	1.45
165	Gilan Sabz Cement	Gilan Sabz, Iran	2005	LHO-750/37	Limestone/Clay	1.4
166	Sharg Cement Co.	Mashad, Iran	2005	LHO-750/37	Limestone/Marl	1.5
167	Nahavand Cement Co.	Nahavand, Iran	2005	LHO-560/35	Limestone/Clay	1.5
168	Lamerd Cement Co.	Lamerd, Iran	2005	LHO-560/35	Limestone/Clay/ Marl	1.5
169	Sardar Cement Co.	Sardar, Iran	2005	LHO-600/35	Limestone / Marl	1.5
170	Khuzestan Cement Co.	Khuzestan, Iran	2005	LHO-700/37	Limestone / Clay	1.4-1.5
171	Jovein Cement Co.	Jovein, Iran	2005	LHO-600/37	Limestone / Marl	1.5