



Engineering
made by ThyssenKrupp Fördertechnik

References
Références

Referenzen
Referencias

Kontinuierliche Schiffsentlader

Continuous Ship Unloaders

Déchargeur continu

Descargadores continuos

Translation	Übersetzung	Traduction	Traducción
Purchaser	Besteller	Client	Cliente
Location	Aufstellungsort	Lieu d'installation	Lugar de instalación
Year of construction	Baujahr	Année de construction	Año de construcción
Type of construction	Bauart	Type de construction	Tipo de construcción
Capacity t/h (Bags/h)	Leistung t/h (Säcke/h)	Débit t/h (sacs/h)	Capacidad t/h (sacos/h)
Material handled	Fördergut	Produits à manutentionne	Material a transportar
Ships size	Schiffsgröße	Dimension de navire	Dimensión de buque
Ships:	Schiffe:	Navires:	Buques:
Seagoing vessels	Hochseeschiffe	Navires de haute mer	Buques de alta mar
Coastal vessels	Küstenschiffe	Caboteurs	Barcos costeros
River barges	Flußschiffe	Bateaux fluviaux	Barcos fluviales

Referenzen der Unternehmen Demag, Polysius, O & K, Krupp India, PWH, PHB, Krupp Industrietechnik sowie der heutigen ThyssenKrupp Fördertechnik und ihrer Auslandsgesellschaften.

References of the companies Demag, Polysius, O & K, Krupp India, PWH, PHB, Krupp Industrietechnik as well as the ThyssenKrupp Fördertechnik of today and its foreign subsidiaries.

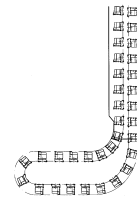
Um die Referenzliste übersichtlich zu halten, beginnt sie mit den Lieferungen aus dem Baujahr 1975.

In order to keep the reference list clear, it is starting with equipment , the year of construction of which was 1975.

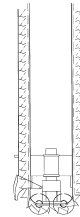
Translation	Übersetzung	Traduction	Traducción
Material handled:	Fördergut:	Produit à manutentionner:	Material a transportar:
Alumina	Tonerde	Alumine	Alúmina
Amonium sulphate	Amoniumsulfat	Sulfate d'ammonium	Sulfato de amonio
Apatite	Apatit	Apatite	Apatita
Bauxite	Bauxit	Bauxite	Bauxita
Cement	Zement	Ciment	Cemento
Clinker	Klinker	Clinker	Clinker
Coal	Kohle	Charbon	Carbón
Coke	Koks	Coke	Coque
Coper concentrate	Kupferkonzentrat	Cuivre concentré	Concentrado de cobre
Crome ore	Chromerz	Minerai de chrome	Mineral de cromo
Fertilizer	Düngemittel	Engrais	Fertilizante
Fertilizer granulate	Düngemittel Granulat	Engrais granulé	Fertilizante granulados
Gold concentrate	Goldkonzentrat	Or concentré	Concentrado de oro
Grain	Getreide	Céréales	Cereales
Heavy soda	Schwer-Soda	Soude lourde	Sosa pesada
Iron ore	Eisenerz	Minerai de fer	Mineral de hierro
Kaolin	Kaolin	Kaolin	Caolín
Limestone	Kalkstein	Calcaire	Piedra caliza
Pellets	Pellets	Boulettes	Pellets
Petroleum coke	Petrolkoks	Coke de pétrole	Coque de petróleo
Phosphate	Phosphat	Phosphate	Fosfato
Potash	Kalisalz	Potasse	Sales potásicas
Pyrite	Pyrit	Pyrite	Pirita
Rice	Reis	Riz	Arroz
Rock salt	Steinsalz	Sel gemme	Sal gema
Rock phosphate	Steinphosphat	Phosphate pierreux	Piedra de fosfato
Salt	Salz	Sel	Sal
Sand (calcareous)	Sand (kalkhaltig)	Sable (calcaire)	Arena (calcáreo)
Sintermagnesite	Sintermagnesit	Magnésite frittée	Magnesita sinterizada
Soda ash	Soda-Asche	Cendre de soude	Ceniza de sosa
Stone coal	Steinkohle	Charbon	Carbón de piedra
Sugar	Zucker	Sucre	Azúcar
Sulphur	Schwefel	Sulfure	Sulfuro
Urea	Harnstoff	Urée	Urea
KCL	KCL	KCL	KCL
DAP	DAP	DAP	DAP
MAP	MAP	MAP	MAP

CSU - Continuous Ship Unloader

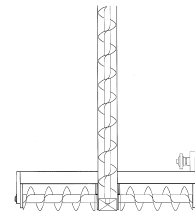
Type A CSU - Chain Bucket Elevator with L-shaped Foot



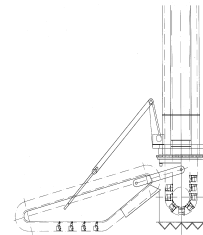
Type B CSU - Chain Scraper Elevator



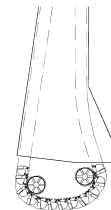
Type C CSU - Screw Elevator with Screw Digging Device



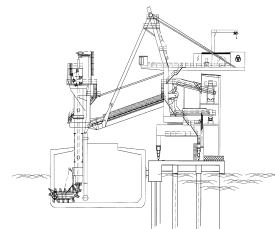
Type D CSU - Chain Bucket Elevator with Scraper Digging Device



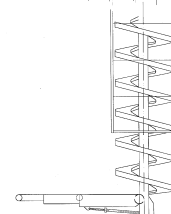
Type E CSU - Barge Unloader with Chain Bucket Elevator



Type F Combined CSU and Shiploader of Bucket Elevator Type



Type G CSU for Bags / Cartons



Continuous Ship Unloaders							
No.	Purchaser Enduser Country	Location	Year of const.	Design features	Capacity t / h	Material handled	Ships size DWT
1	Asbestos Corporation Nordenham / Germany	Nordenham- Blexen, Germany	1975	A	350	Asbestos (fibrous + abrasive)	50 000
2	Jordan Fertilizer Industry Co. Ltd. Amman / Jordan	Aqaba, Jordan	1982	A	550	Sulphur	40 000
3	Söderenergi AB Södertälje / Sweden	Sweden	1982	F	950	Coal	50 000
4	Shanghai Harbour Administration	Shanghai	1985	A	1 600	Coal	25 000
5	TATE & LYLE SUGARS Thames Refinery, London	London- Silvertown, Great Britain	1986	A	1 000	Raw sugar	25 000
6 - 7	MASCHINOIMPORT Moscow / Russia	Juschnyj, Ukrainia	1987	A	800	Phosphate	50 000 - 70 000
8	ROGESA Dillingen / Germany	Dillingen, Germany	1987	E	2400 1200	Iron Ore Coal	
9 - 10	MASCHINOIMPORT Moscow / Russia	Juschnyj, Ukrainia	1988	A	800	Phosphate	50.000 - 70.000
11 - 12	ANSALDO S.I. Genoa / Italy	Nantong, China	1988	A	1500	Coal	5000
13	Kilroot Allot & Lomax Consulting Engineers Manchester / Great Britain	Belfast, Northern Ireland	1988	A	1100	Coal	5000
14	ELKRAFT Copenhagen / Denmark IFV-Energi- Avedorevaerket	Avedoere, Denmark	1989	A	1100	Coal	bulk carriers - 14.000 Barges - 8.500

Continuous Ship Unloaders							
No.	Purchaser Enduser Country	Location	Year of const.	Design features	Capacity t / h	Material handled	Ships size DWT
15 - 16	National Chemical Fertilizer Company IBN-AL-Baytar Al Jubail	Al Jubail, Saudi Arabia	1991	F	400	Phosphate Potash	5 000 - 50 000
17	HAWAII PACIFIC INDUSTRIES Honolulu / USA	Barbers Point Hawaii	1992	A	1 415	Coal, Limestone, Clinker, Gypsum, Sand, Slag	65 000
18	Vereinigte Elektrizitätswerke Westfalen AG Dortmund / Germany	Gersteinwerk Germany	1992	E	1 200	Coal	2 500
19	Empresa Nacional de Electricidad, S.A. ENDESA Madrid / Spain	Ferrol, Spain	1994	A	2 300	Coal, Limestone	100 000
20 - 21	Korea Heavy Industries & Construction Co. Ltd.	Hadong, Korea	1996	A	1 500	Coal	60 000 - 135 000
22 - 23	Korea Heavy Industries & Construction Co. Ltd.	Samchonpo, Korea	1996	A	1 000	Coal	60 000 - 135 000
24 - 25	Shanghai Port Authority	Luojing, China	1996	A	1 500	Coal	50 000
26 - 27	Formosa Petrochemical Corporation	Mai Liao, Taiwan	1997	A	2 200	Coal	60 000 - 180 000
28 - 29	Korea Heavy Industries & Construction Co. Ltd.	Tangjin, Korea	1998	A	1 500	Coal	60 000 - 150 000
30 - 31	Sual Power Station GEC Alsthom Engineering Systems U.K.	Island Luzon, Philippines	1998	A	1 000	Coal	10 000 - 60 000

Continuous Ship Unloaders							
No.	Purchaser Enduser Country	Location	Year of const.	Design features	Capacity t / h	Material handled	Ships size DWT
32 - 33	Hua Yang Electric Company Ltd. (HYEP)	Hai-Chang, China	1998	A	2 200	Coal	30 000 - 100 000
34	Taiwan Cement Engineering Corporation, Taiwan	Hoping, Hualien, Taiwan	1999	A	1 750	Silica Sand Gypsum Pyrite Cinter	10 000 - 30 000
35 - 36	Taiwan Cement Corporation, Taiwan	Hoping, Hualien, Taiwan	2000	A	1 800	Coal	30 000 - 80 000
37 - 38	Korea Heavy Industries & Construction Co. Ltd.	Hadong, Korea	1999	A	1 500	Coal	60 000 - 135 000
39	Cargill Fertilizer, Inc. Riverview, Florida USA	Tampa Florida	2000	A	1300	Sulphur	68 000
40	Jacksonville Electricity Authority, Florida USA	Jacksonville Florida	2001	A	1500	Coal	65 000
41	Zhanjiang Power Plant Guangdong Electric Power Holding Co.	Zhanjiang, China	2002	A	1000	Coal	30 000 - 50 000
42	POSCO	Pohang, Korea	2003	A	2100 (Coal) 3000 (Ore)	Coal; Iron ore	60 000 - 250 000
43 - 44	IHI Co. Ltd. Japan for SKS Malaysia	Tanjung Bin, Johor Malaysia	2005	A	2000	Coal	35 000 - 150 000
45	Hua Yang Electric Power Co., Ltd. (HYEP)	Hou Shi Village, Longhai, Zhangzhou, Fujian, China	2005	A	2500	Coal	35 000 - 100 000
46 - 47	Guangdong Red Bay Power Generation Co. Ltd., China	Shanwei PP, Guangdong China	2006	A	1800	Coal	35 000 - 150 000

Continuous Ship Unloaders							
No.	Purchaser Enduser Country	Location	Year of const.	Design features	Capacity t / h	Material handled	Ships size DWT
48- 49	Guangdong Yudean Power Group	Huilai (Jinghai) Power Plant, Guangdon, China	2006	A	1800	Coal	35 000 - 150 000
50 - 51	IHI Co. Ltd. Japan	Jimah PP, Mukim Jimah, Malaysia	2006/ 2007	A	1800	Coal	35 000 - 150 000

Continuous Bag Unloaders

No.	Purchaser	Location	Year of const.	Design features	Capacity t / h (Bags / h)	Material handled	Ships size DWT
1 - 2	Matschappij van de Brugse Zeevaartinrichtigen (M.B.Z.)	Zeebrugge, Belgium	1984	G	(3 800 à 22 kg)	Cartons with fruit	Ocean going vessels
3	Matschappij van de Brugse Zeevaartinrichtigen (M.B.Z.)	Zeebrugge, Belgium	1990	G	(3800 à 22 kg)	Cartons with fruit	Ocean going vessels



Krupp Canada Inc.

Suite 405, 1177 11 Ave. S.W.
CDN-Calgary, Alberta T2R 0G5
Canada
Phone: +1 403 245 2866
Fax: +1 403 245 5625
E-mail: info@krupp.ca

ThyssenKrupp Fördertechnik Latino Americana Razão Social: Polysius do Brasil Ltda.

Condomínio do Edifício Colúmbia
Rua Ceará no. 1.566 - 8º andar
Bairro Funcionários
CEP 30.150-311 - Belo Horizonte - MG. Brasil
Phone: +55 31 32 633900
Fax: +55 31 32 633990
E-mail: krupp-bh@bh.krupp-eng.com.br

Krupp Materials Handling

A Division of ThyssenKrupp Engineering (Pty) Ltd.

P O Box 1636
Gallo Manor 2052
South Africa
Phone: +27 11 236 1000
Fax: +27 11 236 1125
E-mail: krupp@krupp.co.za

ThyssenKrupp Robins Inc.

7730 East Belleview Avenue #404
Greenwood Village, CO 80111
Phone: +1 303 770 0808
Fax: +1 303 770 8233
E-mail: krupprobins@compuserve.com

ThyssenKrupp Fördertechnik GmbH

Ernst-Heckel-Str. 1
66386 St. Ingbert-Rohrbach
Phone: +49 68 94 599 0
Fax: +49 68 94 599 468
E-mail: info-mh@thyssenkrupp.com

ThyssenKrupp Materials Handling Ltd.

Nene House, Drayton Way,
Daventry, Northamptonshire. NN11 8EA
England
Phone: +44 1327 301199
Fax: +44 1327 300681
E-mail: david@tkmh.co.uk

ThyssenKrupp Foerdertechnik GmbH

Beijing Representative Office

Unit 4B, 22/F, China Life Tower,
No. 16, Chaoyangmenwai Avenue,
Chaoyang District, Beijing 100020, P.R. China
Phone: +86 10 8525 2999
Fax: +86 10 8525 2181
E-mail: kfpeking@tkpek.com.cn

ThyssenKrupp Engineering (Australia) Pty. Ltd.

179 Great Eastern Highway
Belmont WA 6104
Phone: +61 8 9277 0000
Fax: +61 8 9277 4400
E-mail: mail@krupp.com.au

ThyssenKrupp Industries India Pvt. Ltd.

P.O: Bag No. 22
Pimpri, Pune 411 018
India
Phone: +91 20 2742 5461 - 5464
Fax: +91 20 2742 5350
E-mail: tkii@thyssenkruppindia.com

ThyssenKrupp Fördertechnik GmbH

Altendorfer Str. 120
45143 Essen
Phone: +49 201 828 04
Fax: +49 201 828 2566
E-mail: marketing-TKF@thyssenkrupp.com